

Monthly Newsletter

02. 05. 2025

APTA Alabama Student Special Interest Group

It is February- CSM Month!!



Students,

February has arrived, bringing us within days of CSM! January was a month of new beginnings, with third-year students embarking on their clinical rotations, first-year students starting a new semester, and second-year students progressing through their final full year of didactic coursework. Take a moment to explore the remarkable achievements of our students!

Julia Sasser, SPT



In this Newsletter you can expect:

- Program Representatives
- PT Night out
- Combined Sections Meeting
- Student Spotlight
- NPTE Question

Introducing our APTA Alabama Program Representatives



Andrew Hall, UAB



Marcus Atkins, Faulkner



Kara Hestevold, UAB



Meagan Sellers, USA



Jaxon Bannister, ASU





Ben Greene, ASU



Madison Lundy, USA

PT Night Out



JOIN US FOR AN UPCOMING PT NIGHT OUT

JANUARY 29 - 6:00 PM
Brock's Gap Brewing Company
Hoover, AL

FEBRUARY 4 - 6:00 PM
FOLKLORE BREWING
Dothan, AL

FEBRUARY 27 - 5:00 PM
Loosa Brews
Tuscaloosa, AL

ALL ARE INVITED
Members & Non-Members

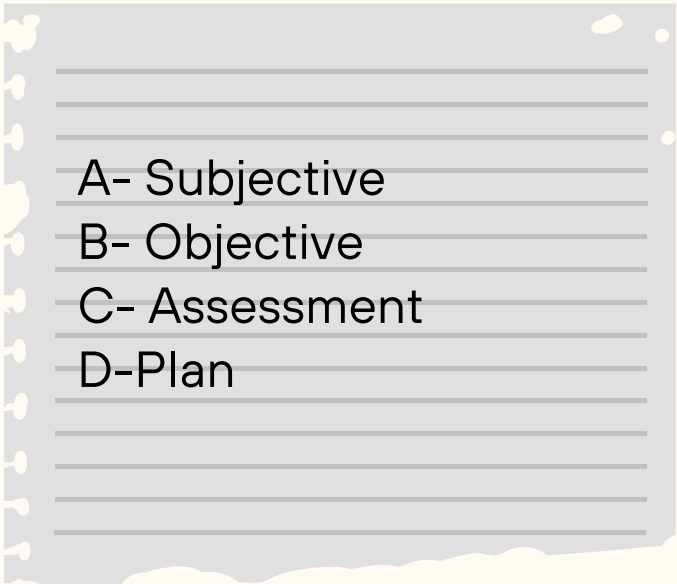
We had an amazing turnout of students and practitioners at the PT Night out in Birmingham! We loved having meaningful conversations, networking, and enjoying each others company!

Upcoming PT Night Out!

- February 4- 6:00 PM
 - Folkore Brewing- Dothan, AL
- February 27- 5:00 PM
 - Loosa Brews- Tuscaloosa, AL

NPTE Question!

A patient begins to cry I the middle of a treatment session. The Physical Therapist attempts to comfort the patient, however, eventually has to discontinue treatment. What section of the S.O.A.P. note would be most appropriate to document the incident?

- 
- A- Subjective
 - B- Objective
 - C- Assessment
 - D-Plan

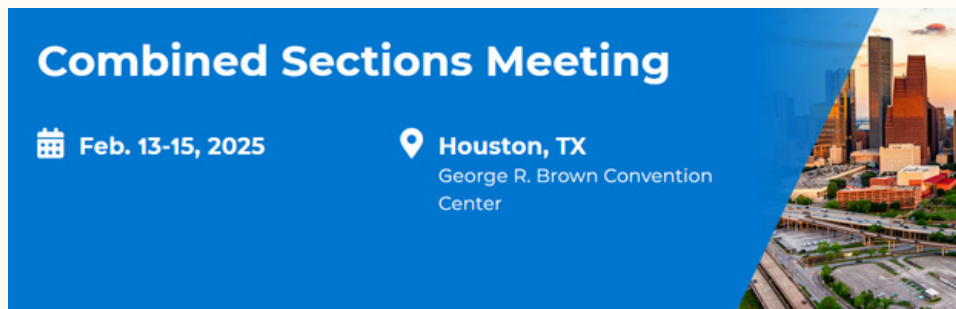
Student Spotlight

April Hudson, SPTA Wallace Community College

I'm 38, turning 39 in April, and have been married to my high school sweetheart for 20 years. My husband, a wounded vet, suffered a combat-related injury in 2009, leading to severe back issues (two surgeries, possibly a third), TBI, and PTSD. At the time, I was in PTA school but had to leave when we moved back to Alabama for his medical discharge and care. After unsuccessful IVF attempts, we became foster parents in 2011 and later adopted three children—AJ (12), Noah (11), and Raeleigh (7)—from difficult backgrounds, while our youngest, Evie (2), came to us through another foster child we cared for. I put my education on hold to be my husband's full-time caregiver as he battled ongoing health issues. When my 7-year-old started kindergarten, I decided to return to PTA school, and despite life's challenges, including adopting Evie, I remained committed. I want to show my children that no matter what life throws at you, it's never too late to better yourself—short-term sacrifices lead to long-term goals.

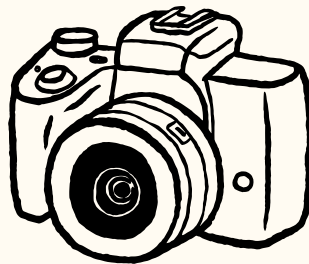


Combined Sections Meeting February 13-15, 2025



CSM is quickly approaching! See below for more information:

- Where? George R. Brown Convention Center
 - 1001 Avenida De Las Americas, Houston, TX 77010
- Student Resources: <https://csm.apta.org/about/apta-csm-student-resources>
- What sessions should I attend:
<https://apta.confex.com/apta/csm2025/meetingapp.cgi>



Students!

Send all photos and videos from
CSM to Julia Sasser:
Email: jsasser1@uab.edu
Number: (205) 937-6114

Download the app here:



NPTE Question

Answer: C- Assessment

Thank you for reading! Have a great month!
